

# BTT25/BTT35

## BALL TRANSFER TABLE

Ball transfer tables are ideal where products need to be manually rotated or repositioned at a work station. They are also used when manually transferring products from one conveyor line to another.

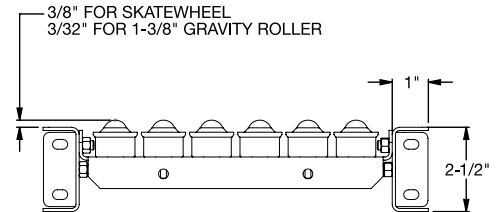
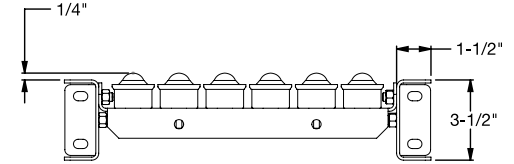


- 1 in. ball casters
- 4 ball centers
- Powder coated steel frames

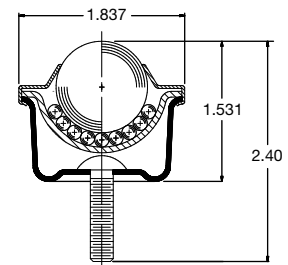
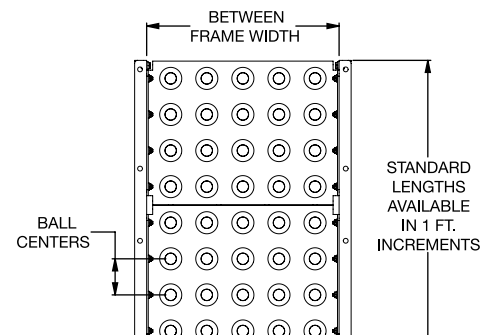
BTT35 (3 1/2 IN. FRAMES)			
BETWEEN FRAME WIDTH	OVERALL WIDTH	MODEL NO.	WEIGHT PER FOOT
13"	16"	BTT35-13-2	25.86
		BTT35-13-3	18.06
		BTT35-13-4	15.33
		BTT35-13-6	-
15"	18"	BTT35-15-2	29.15
		BTT35-15-3	20.57
		BTT35-15-4	17.45
		BTT35-15-6	-
17"	20"	BTT35-17-2	32.45
		BTT35-17-3	21.53
		BTT35-17-4	18.41
		BTT35-17-6	16.07
19"	22"	BTT35-19-2	35.72
		BTT35-19-3	23.99
		BTT35-19-4	20.48
		BTT35-19-6	16.97
21"	24"	BTT35-21-2	39.28
		BTT35-21-3	25.50
		BTT35-21-4	21.43
		BTT35-21-6	18.70
23"	26"	BTT35-23-2	42.27
		BTT35-23-3	27.45
		BTT35-23-4	23.55
		BTT35-23-6	19.66
25"	28"	BTT35-25-2	45.52
		BTT35-25-3	29.92
		BTT35-25-4	24.45
		BTT35-25-6	20.56
27"	30"	BTT35-27-2	48.81
		BTT35-27-3	32.43
		BTT35-27-4	26.58
		BTT35-27-6	22.90
31"	34"	BTT35-31-2	55.35
		BTT35-31-3	35.85
		BTT35-31-4	29.61
		BTT35-31-6	24.15
33"	36"	BTT35-33-2	58.65
		BTT35-33-3	38.37
		BTT35-33-4	30.57
		BTT35-33-6	25.86
37"	40"	BTT35-37-2	65.19
		BTT35-37-3	41.79
		BTT35-37-4	33.60
		BTT35-37-6	27.75
39"	42"	BTT35-39-2	68.48
		BTT35-39-3	44.30
		BTT35-39-4	35.72
		BTT35-39-6	29.48

BTT25 (2 1/2 IN. FRAMES)			
BETWEEN FRAME WIDTH	OVERALL WIDTH	MODEL NO.	WEIGHT PER FOOT
10"	12"	BTT25-10-2	19.77
		BTT25-10-3	15.09
		BTT25-10-4	12.75
		BTT25-10-6	-
13"	15"	BTT25-13-2	25.86
		BTT25-13-3	18.06
		BTT25-13-4	15.33
		BTT25-13-6	-
16"	18"	BTT25-16-2	29.60
		BTT25-16-3	21.02
		BTT25-16-4	17.90
		BTT25-16-6	15.56
22"	24"	BTT25-22-2	42.27
		BTT25-22-3	27.45
		BTT25-22-4	23.55
		BTT25-22-6	19.66

LOAD CAPACITY (LBS.)			
FRAME SIZE	SUPPORT CENTERS	MAXIMUM DISTRIBUTED LIVE LOAD PER FOOT	MAX. STATIC LOAD PER BALL
2 1/2" X 1" X 12 ga.	5'	270	65
	10'	38	
3 1/2" x 1 1/2" x 10 ga.	5'	620	
	10'	135	



3/8" FOR SKATEWHEEL  
3/32" FOR 1-3/8" GRAVITY ROLLER



## STANDARD SPECIFICATIONS

**FRAME** – 2 1/2 in. deep x 1 in. flange x 12 ga. powder coated steel for bolting up to 1 3/8 in. dia. gravity roller conveyor or skatewheel conveyor (specify). 3 1/2 in. deep x 1 1/2 in. flange x 10 ga. powder coated steel for bolting up to 1.9 dia. gravity roller conveyor or other select powered conveyors.

### WIDTHS

- 2 1/2" frames: 10 in., 13 in., 16 in. and 22 in. between frames
- 3 1/2" frames: 13 in., 15 in., 17 in., 19 in., 21 in., 23 in., 25 in., 27 in., 31 in., 33 in., 37 in. and 39 in. between frames

**LENGTHS** – 1 ft. through 10 ft. in 1 ft. increments

**COUPLINGS** – Butt type for bolting sections together

**BALL TRANSFERS** – 1 in. dia. ball transfers

**BALL CENTERS** – 2 in., 3 in., 4 in. or 6 in. centers

## OPTIONAL EQUIPMENT

**SUPPORTS** – Stationary floor supports are available in a wide range of adjustments

**GUIDE RAILS** – Adjustable channel guide rails, fixed angle and channel guide rails

**LESS FRAME** – Pans with ball transfers only