

FMS19Z

FLAT MOTOR CONVEYOR (1.9 in. dia. x 16 ga. rollers) (Zero Pressure Accumulation 24 VDC)

The FMS19Z live roller conveyor is ideal for accumulating cartons, boxes or totes using a series of accumulation zones. It is designed for applications that require the accumulation of products without a buildup of line pressure. Each zone's tread rollers are powered by a 24VDC motor that is controlled by a **ProLogic** zone controller. Ease of use, quiet operation and reduced energy consumption are all characteristics of this conveyor.

- 12 widths
- ProLogic accumulation system
- Quiet operation
- Sleep mode reduces power consumption



**ProLogic
ACCUMULATION SYSTEM**
Patent Pending

CONVEYOR WEIGHT (LBS.)												
BETWEEN FRAME WIDTH												
	13"	15"	17"	19"	21"	23"	25"	27"	31"	33"	37"	39"
OVERALL FRAME WIDTH												
	16"	18"	20"	22"	24"	26"	28"	30"	34"	36"	40"	42"
10' LENGTH	350	365	375	390	405	415	430	445	470	485	510	525
PER FOOT	23	24	26	27	28	30	31	32	35	36	39	41

- Notes:
- Minimum overall conveyor length = 3'-0"
 - Zone length must be a multiple of roller centers
 - Overall conveyor length must be a multiple of zone length

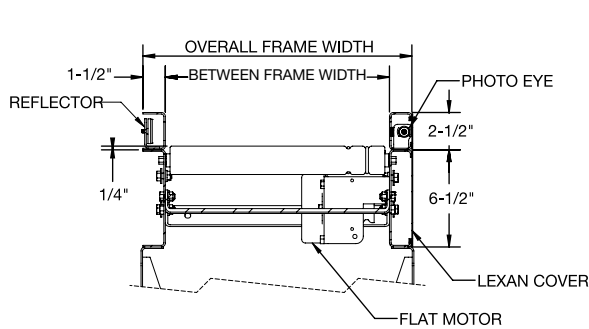
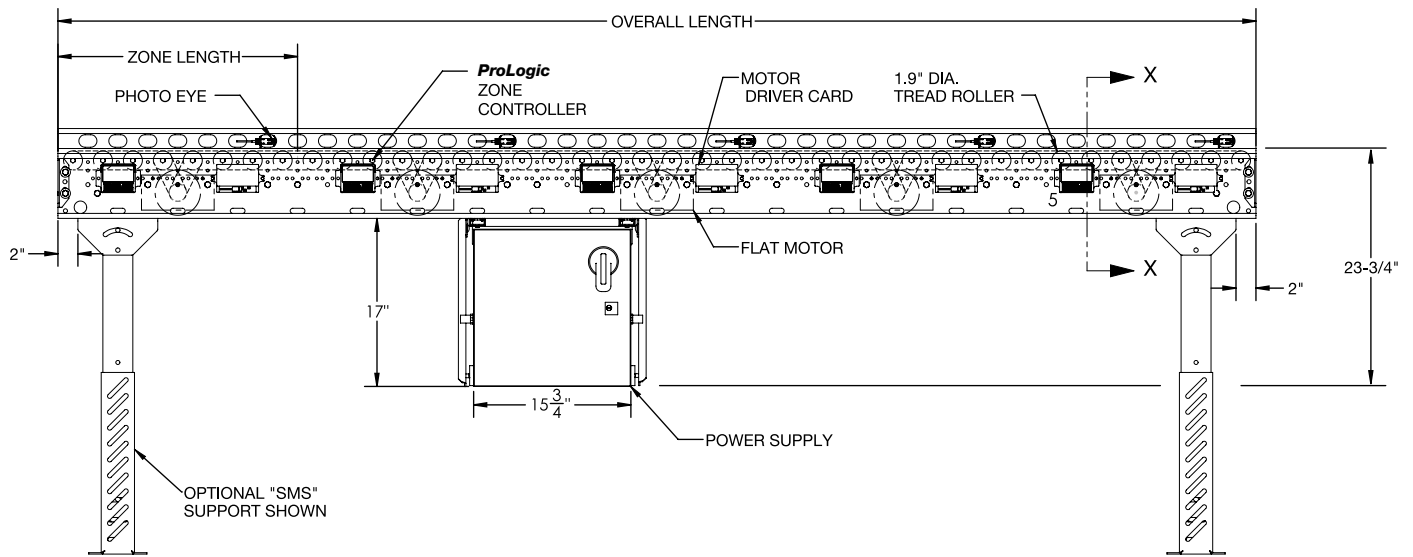
STANDARD SPECIFICATIONS

- BED** – 6 1/2 in. deep x 1 1/2 in. flange x 12 ga. powder painted formed steel channel frame with 1.9 in. dia. x 16 ga. galvanized tread rollers spaced on 3 in. centers. Sections bolted together with butt couplings.
- GUIDE RAIL** – 2 1/2" deep guide rails protect photo eye and reflectors while also preventing product spillage
- COVER** – Transparent smoked Lexan covers on drive side to protect electrical components
- CROSS BRACING** – Rods with turnbuckles are fastened to underside of bed to provide squaring adjustment and ensure correct product tracking. One set of turnbuckles are supplied for every 50 ft. of conveyor.
- MOTOR** – One 24 VDC flat motor in each zone mounted on inside of conveyor frame
- MOTOR DRIVER CARD** – One required for each motor
- DRIVE/SLAVE BELTS** – 3/16 in. dia. urethane belts from motor drive spool to rollers and roller to roller
- ACCUMULATION ZONES** – 12 in., 18 in., 24 in., 30 in., or 36 in. zones
- POWER SUPPLY** – 40 AMP DC power supply to power motors, zone controllers and photo eyes. 115/230 VAC single phase input, 24 VDC output. Mounted near center of conveyor.
- ProLogic ZONE CONTROLLER** – Located in each zone. Controls the accumulation or release of product. See controls section.
- SENSORS** – Retro-reflective photo eye with reflector
- BEARINGS** – Tread rollers have grease packed ball bearings
- CONVEYING SPEED** – 50-120 FPM. Selectable on motor drive card.
- CAPACITY** – Maximum load per linear foot of conveyor 37 lbs. not to exceed 75 lbs. per zone.

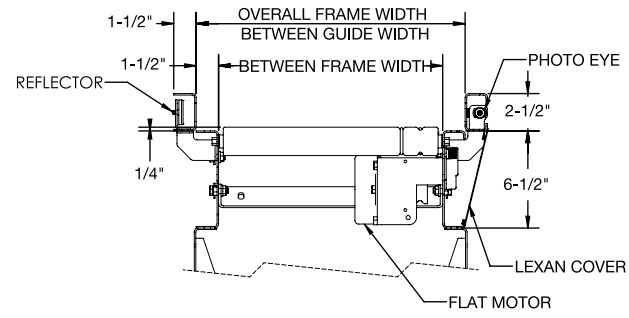
HOW IT WORKS:

The conveyor consists of multiple accumulation zones. Each zone's tread rollers are powered by a 24VDC motor that can be turned on or off to convey or stop the product. **ProLogic** zone controllers sense the presence of products in each zone and control the accumulation or release of the product. If downstream zone is full, motor in preceding zone is turned off stopping the product. Once downstream zone is empty, motor will turn on and product will continue down the conveyor.





SECTION X-X (STANDARD ROLLERS LOW)



ROLLERS HIGH OPTION WITH OUTBOARD GUIDE RAILS

OPTIONAL EQUIPMENT

FLOOR SUPPORTS – SMS type floor supports are available with a wide range of adjustment. Specify top of roller elevation. One support required at every bed joint and ends of conveyor. Holes in feet for lagging to floor. Knee braces included on SMS-7 support and above.

CONVEYING SPEED – Contact factory for speeds up to 180 FPM. Note: speeds above 120 FPM will affect product accumulation and product coast.

ROLLERS HIGH – Outboard guiderails to allow 1 1/2 in. of product overhang per side

POWER SUPPLY – Other power supplies are available based on system need. 460 V three phase input is also available.

- 5 amp power supply (3 motors maximum)
- 20 amp power supply (20 motors maximum)

SENSOR – Diffuse photo eye

ADDITIONAL GUIDE RAILS – Adjustable channel guide rail. Note: If product comes into contact with guide rails, product flow may be affected.

OTHER ACCESSORIES – Poly-tier supports, ceiling hangers. See accessory section.

FMC19Z

FLAT MOTOR CURVE

(Tapered rollers)

(Zero Pressure Accumulation 24 VDC)

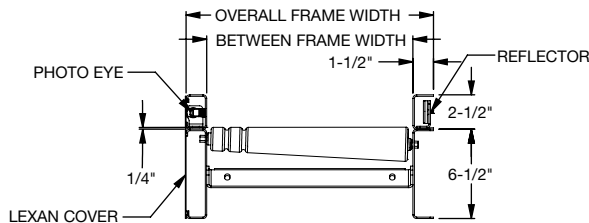
The FMC19Z live roller curves are compatible with straight sections and spurs providing flexibility to your conveyor line. Dependent upon the degree, each curve has one or two accumulation zones.

- 12 widths
- ProLogic accumulation system
- Tapered tread rollers
- 30, 45, 60 and 90 degree curves

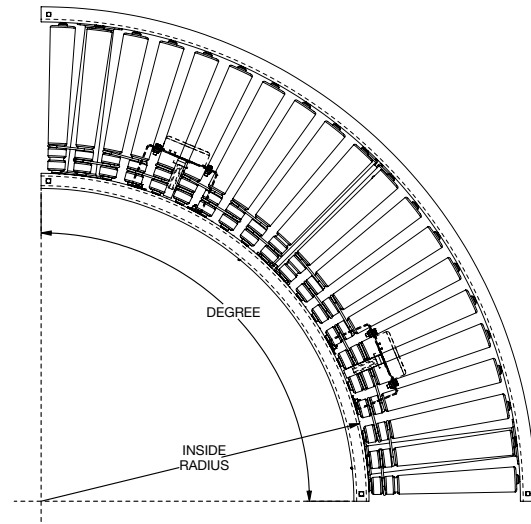


ProLogic ACCUMULATION SYSTEM
Patent Pending

BETWEEN FRAME WIDTH	OVERALL FRAME WIDTH	INSIDE RADIUS	NUMBER OF ROLLERS				WEIGHT (LBS.)	
			30°	45°	60°	90°	30° & 60°	60° & 90°
13"	16"	24"	5	8	10	16	110	200
15"	18"						121	220
17"	20"						132	240
19"	22"						143	260
21"	24"						154	280
23"	26"						165	300
25"	28"	32-1/2"	7	10	14	20	171	310
27"	30"						178	325
31"	34"						274	495
33"	36"	48"	10	14	22	30	286	520
37"	40"						311	565
39"	42"						325	590



STANDARD ROLLERS LOW SHOWN



STANDARD SPECIFICATIONS

BED – 6 1/2 in. deep x 1 1/2 in. flange x 12 ga. powder coated steel channel with 2 1/2 in. dia. tapered to 1 11/16 in. dia. x 14 ga. galvanized rollers.

GUIDE RAIL – 2 1/2" deep guide rails protect photo eye and reflectors while also preventing product spillage

COVER – Transparent smoked Lexan covers on drive side protect electrical components

CURVES – 30, 45, 60 and 90 degree curves. 24 in., 32 1/2 in. or 48 in. radius dependent upon between frame widths.

MOTOR – One 24 VDC flat motor in each zone mounted on inside of conveyor frame

MOTOR DRIVER CARD – One required for each motor

DRIVE/SLAVE BELTS – 3/16 in. dia. urethane belts from motor drive spool to rollers and roller to roller

ACCUMULATION ZONES – Two zones within 60 and 90 degree curves, one zone within 30 and 45 degree curves

POWER SUPPLY – Not included. Typically powered from straight section power supply.

ProLogic ZONE CONTROLLER – Located in each zone. Controls the accumulation or release of product. See controls section.

SENSORS – Retro-reflective photo eye with reflector

BEARINGS – Tread rollers have grease packed ball bearings

CONVEYING SPEED – 50-120 FPM. Selectable on motor drive card.

OPTIONAL EQUIPMENT

FLOOR SUPPORTS – SMS Type floor supports are available with a wide range of adjustment. Specify top of belt or roller elevation. One support required at every bed joint and ends of conveyor. Holes in feet for lagging to floor. Knee braces included on SMS-7 support and above.

ROLLERS HIGH – Outboard guiderails to allow 1 1/2 in. of product overhang per side

POWER SUPPLY – 5 amp power supply is available for stand-alone curves (3 motors maximum)

SENSOR – Diffuse photo eye

SLAVED TANGENTS – 3 in. or 6 in. tangents slaved from curve with urethane O-ring belts

POWERED TANGENTS – 9 in., 12 in., 15 in., 18 in. or 21 in. tangents including one 24 VDC motor and motor driver card

ADDITIONAL GUIDE RAILS – Adjustable channel guide rail. Note: If product comes into contact with guide rails, product flow may be affected.

OTHER ACCESSORIES – Poly-tier supports, ceiling hangers. See accessory section.

FLAT MOTOR STRAIGHT SPUR
(1.9 in. dia. x 16 ga. rollers)
(Zero Pressure Accumulation 24 VDC)

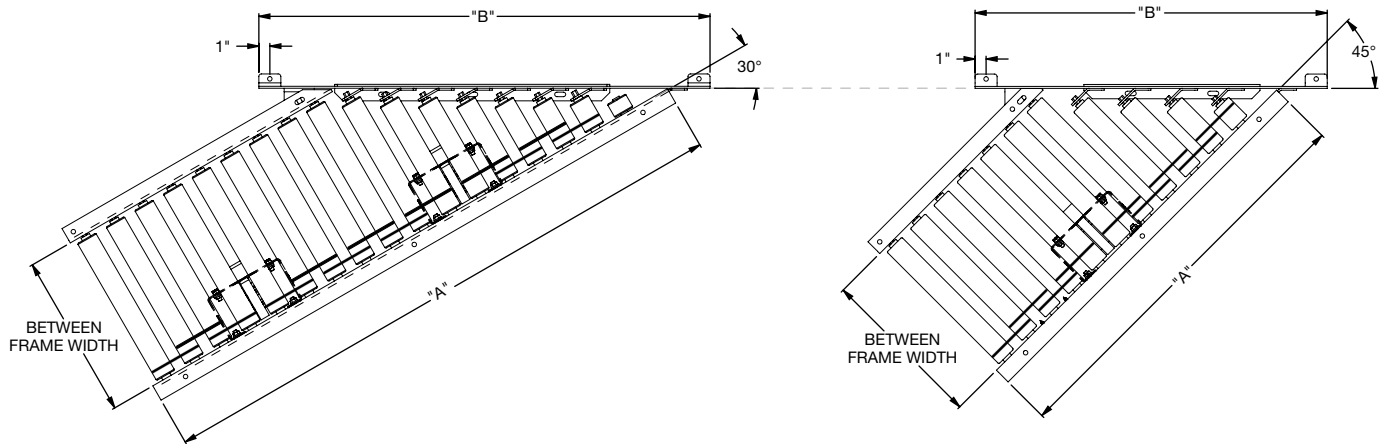
The Model FMSS19Z straight spurs are used to merge product from one conveying line onto another. Each zone's tread rollers are powered by a 24VDC motor that is controlled by a ProLogic zone controller.

ProLogic
ACCUMULATION SYSTEM
Patent Pending

- 12 widths
- ProLogic accumulation system
- 30 and 45 degree straight spurs

BETWEEN FRAME WIDTH	OVERALL FRAME WIDTH	NUMBER OF MOTORS		"A"		"B"		WEIGHT (LBS.)			
		30°	45°	30°	45°	30°	45°	30°	45°		
13"	16"	1	1	30"	21"	38"	29"	224	177		
15"	18"	2		54"	36"	41"	32"	233	184		
17"	20"					47"	35"	241	191		
19"	22"					50"	38"	249	198		
21"	24"					53"	41"	256	204		
23"	26"					56"	44"	262	210		
25"	28"					62"	47"	272	219		
27"	30"					65"	50"	278	225		
31"	34"					75"	48"	74"	56"	290	237
33"	36"							77"	59"	296	242
37"	40"							86"	65"	306	253
39"	42"	89"		68"	310			256			

PLAN VIEW – 30° AND 45° STRAIGHT SPURS



STANDARD SPECIFICATIONS

BED – 6 1/2 in. deep x 1 1/2 in. flange x 12 ga. powder coated steel channel with 1.9 in. dia. x 16 ga. galvanized tread rollers spaced on 3 in. centers.

GUIDE RAIL – 2 1/2" deep guide rails protect photo eye and reflectors while also preventing product spillage

COVER – Transparent smoked Lexan covers on drive side protect electrical components

SPURS – 30 and 45 degree spurs

MOTOR – 24 VDC flat motor(s) mounted on inside of conveyor frame

MOTOR DRIVER CARD – One required for each motor

DRIVE/SLAVE BELTS – 3/16 in. dia. urethane belts from motor drive spool to rollers and roller to roller

ACCUMULATION ZONES – One accumulation zone per spur

POWER SUPPLY – Not included. Typically powered from straight sections power supply.

ProLogic ZONE CONTROLLER – Controls the accumulation or release of product. See controls section.

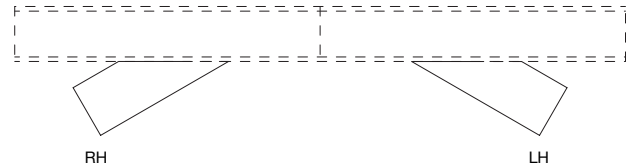
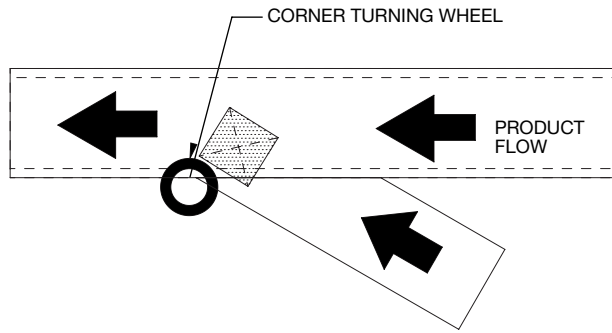
SENSORS – Retro-reflective photo eye with reflector

BEARINGS – Tread rollers have grease packed ball bearings

CONVEYING SPEED – 50-120 FPM. Selectable on motor drive card.

CAPACITY – 75 lbs

MERGING



OPTIONAL EQUIPMENT

FLOOR SUPPORTS – SMS Type floor supports are available with a wide range of adjustment. Specify top of belt or roller elevation. One support required at every bed joint and ends of conveyor. Holes in feet for lagging to floor. Knee braces included on SMS-7 support and above.

ROLLERS HIGH – Outboard guide rails to allow 1 1/2 in. of product overhang per side

POWER SUPPLY – 5 AMP power supply is available for stand-alone spurs (3 motors maximum)

SENSOR – Diffuse photo eye

GUIDE RAILS – Adjustable channel guide rails. Note: If product comes into contact with guide rails, product flow may be affected.

OTHER ACCESSORIES – Poly-tier supports, ceiling hangers. See accessory section.