

CONVEYOR RAILS

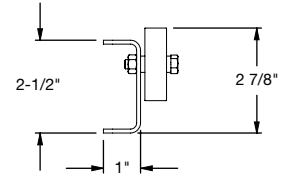
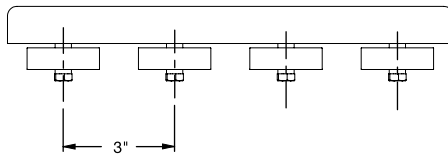
Conveyor rails utilize standard skatewheels mounted to various frame configurations. They are ideal for gravity storage flow racks.

- 5 frame configurations
- 12 ga. powder coated steel frames
- Ideal for gravity storage flow racks

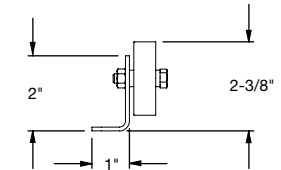
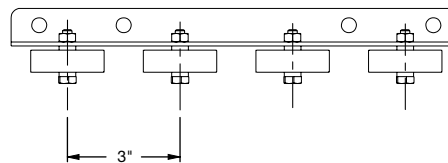
CONVEYOR RAIL LOAD CAPACITY						
SUPPORT CENTERS	MAXIMUM LOAD PER FOOT (LBS.)					
	TYPE 1	TYPE 2	TYPE 3S	TYPE 3P	TYPE 4	TYPE 5
3'	260	223	260	260	260	260
4'	260	92	233	233	260	210
5'	146	50	125	125	198	113
6'	83	28	71	71	112	64
7'	51	17	44	44	69	40
8'	35	12	38	38	49	27
10'	18	6	15	15	24	14

Wheel capacity = 65 lbs. each

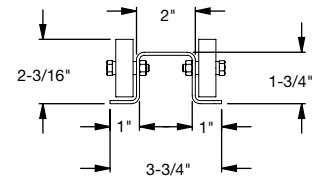
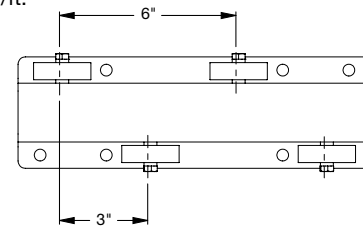
TYPE 1 – Rail weight: 2.5 lbs./ft.



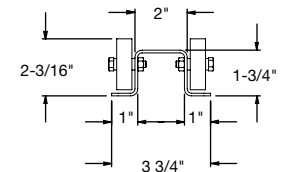
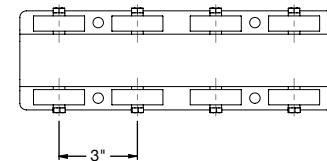
TYPE 2 – Rail weight: 2.1 lbs./ft.



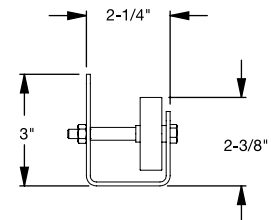
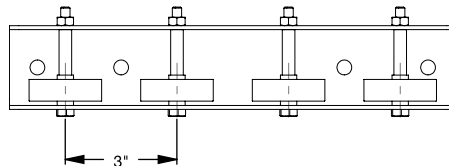
TYPE 3S (Wheels staggered) – Rail weight: 3.5 lbs./ft.



TYPE 3P (Wheels paired) – Rail weight: 4.2 lbs./ft.



TYPE 4 – Rail weight: 3.5 lbs./ft.



TYPE 5 – Rail weight: 3.0 lbs./ft.

