

LSS19



LINESHAFT DRIVEN LIVE ROLLER CONVEYOR (1.9 in. dia. X 16 ga. Galvanized rollers) (Minimum Pressure Accumulation)



The model LSS19 live roller conveyor is ideal for transporting or accumulating products. Its unique design allows product to accumulate with only minimal back pressure.

- 12 widths
- Minimum pressure accumulation
- Quiet operation

CONVEYOR WEIGHT (LBS.)												
OVERALL LENGTH	BETWEEN FRAME WIDTH											
	13"	15"	17"	19"	21"	23"	25"	27"	31"	33"	37"	39"
	OVERALL WIDTH											
	16"	18"	20"	22"	24"	26"	28"	30"	34"	36"	40"	42"
5'	184	190	198	205	213	219	227	234	248	256	271	277
10'	292	304	318	332	346	359	373	387	413	427	455	468
15'	400	418	439	459	479	498	519	539	578	599	640	658
20'	507	532	560	586	613	638	665	692	743	770	824	849
25'	615	646	680	713	747	777	811	844	908	942	1009	1039
30'	724	760	800	840	880	917	957	997	1073	1113	1193	1230
35'	832	874	921	967	1014	1056	1103	1149	1238	1285	1378	1420
40'	940	988	1041	1094	1147	1196	1249	1302	1403	1456	1562	1611
45'	1048	1102	1162	1221	1281	1335	1395	1454	1568	1628	1747	1801
50'	1156	1216	1282	1348	1414	1475	1541	1607	1733	1799	1931	1992
55'	1264	1330	1402	1475	1547	1614	1687	1759	1898	1971	2116	2182
60'	1372	1444	1523	1602	1681	1754	1833	1912	2063	2142	2300	2373
65'	1478	1559	1643	1729	1815	1893	1979	2064	2228	2314	2485	2563
70'	1588	1673	1764	1856	1948	2033	2125	2217	2393	2485	2669	2754
75'	1696	1787	1885	1983	2082	2172	2271	2369	2558	2657	2854	2944
80'	1804	1900	2005	2110	2215	2312	2417	2522	2723	2828	3038	3135
85'	1912	2015	2126	2237	2349	2451	2563	2674	2888	3000	3223	3325
90'	2020	2129	2246	2364	2482	2591	2709	2827	3053	3171	3407	3516
95'	2128	2243	2367	2491	2616	2730	2855	2979	3218	3343	3592	3706
100'	2236	2357	2487	2618	2749	2870	3001	3132	3383	3514	3776	3897

STANDARD SPECIFICATIONS

BED - 5 1/2 in. deep x 1 1/2 in. flange x 12 ga. powder painted coated steel channel frame with 1.9 in. dia. x 16 ga. galvanized tread rollers spaced every 3 in. Sections bolted together with butt couplings.

COUPLINGS - Butt type for connecting to LSC19 or LSSS19 conveyors

CROSS BRACING - Rods with turnbuckles are fastened to underside of bed to provide squaring adjustment and ensure correct product tracking. One set of turnbuckles are supplied for every 50 ft. of conveyor.

DRIVE - Mounted underneath of conveyor. Note: Motor extends beyond frame of conveyor if between frame width is less than 20 inches

DRIVE SHAFT - 1 in. dia. steel shaft full length of conveyor. Shafts are coupled together by a Delrin chain coupling at each bed joint.

DRIVE SPOOLS - 2 in. Delrin spool held in place on shaft by "snap-on" retaining clips

DRIVE BELTS - 3/16 in. dia. urethane belts from drive spools to rollers

SPOOL GUARD - Encloses underside of drive shaft, spools and drive belts. Full length of conveyor.

BEARINGS - Sealed, self-aligning, pre-lubricated ball bearings support drive shaft

CONVEYING SPEED - Constant 60 FPM

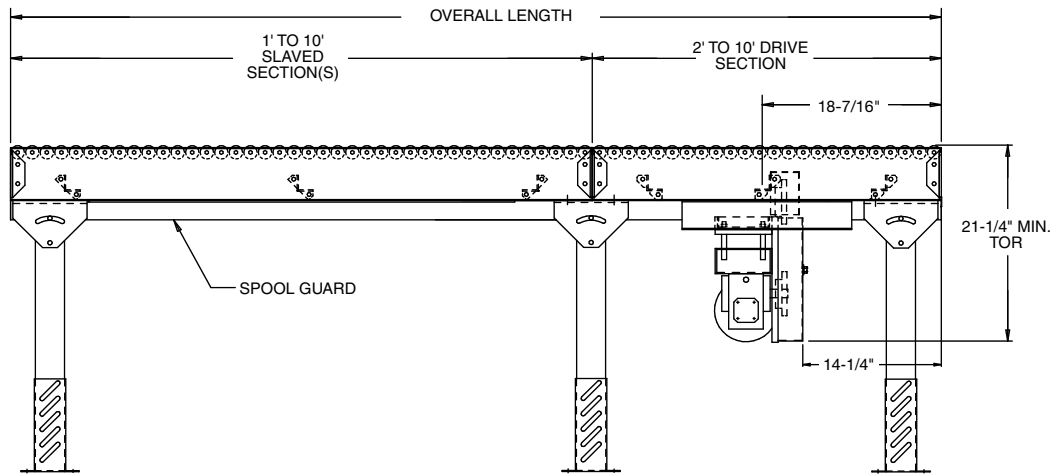
SPEED REDUCTION - Sealed worm gear C-Faced speed reducer with No. 50 roller chain to drive shaft

MOTOR - 1/2 HP -230/460 3 Phase - 60 Hz totally enclosed fan cooled, energy efficient

CAPACITY - Maximum load per roller is 15 lbs. with a maximum individual product load of 75 lbs. Maximum driven length with single drive at center is 120 ft. Not to exceed capacity in chart.

		BETWEEN FRAME WIDTH	LOAD CAPACITY CHART (LBS.)			
FPM	HP		OVERALL LENGTH			
			10'	25'	50'	100'
30	1/2	13"-39"	500	1250	2500	N/A
	1		500	1250	2500	5000
60	1/2	13"-39"	500	1250	N/A	N/A
	1		500	1250	2500	N/A
	2		500	1250	2500	5000
90	1/2	13"-39"	500	1250	N/A	N/A
	1		500	1250	2500	N/A
	2		500	1250	2500	5000

Note: Capacities shown assume a constant speed and maximum of 6 starts/stops per minute with no more than 30 starts/stops per hour.



OPTIONAL EQUIPMENT

FLOOR SUPPORTS - H-style floor supports are available with a wide range of adjustments. Specify top of roller elevation. One support is required at every bed joint and at the ends of conveyor. Holes in feet are provided for lagging to floor. Knee braces supplied on MHST-9 support and above.

CONVEYING SPEED - Constant and variable speeds from 30 to 120 FPM. Contact factory for speeds not listed.

MOTORS - Inverter duty, premium energy efficient, single phase, 2 HP maximum

SIDE MOUNTED DRIVE - Motor reducer unit mounted to side of conveyor. Minimum elevation: 11 3/4 in. TOR

TIMING BELT DRIVE - Option to chain drive allowing for quieter operation. Required at speeds of 120 FPM and greater.

ROLLER CENTERS - 2 in., 4 in., 6 in. and 8 in. roller centers are also available

POSITIVE DRIVE - Keyed spools and drive shaft provide positive drive

POWER CROSSOVER - 1 ft. long section that switches drive shaft from one side of the conveyor to the other. Can also be used to increase/decrease speed.

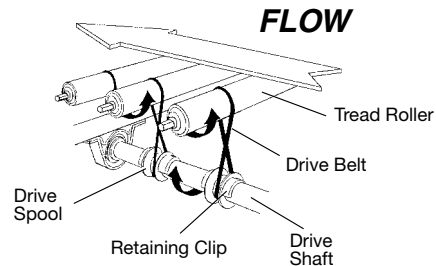
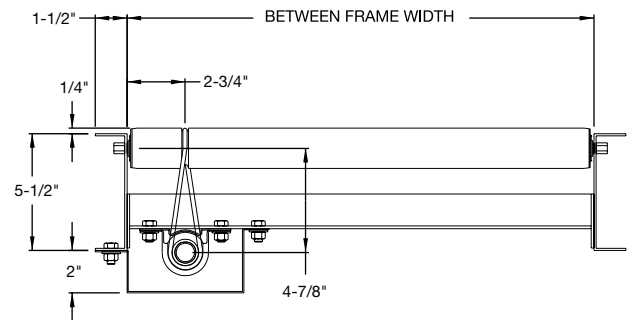
PNEUMATIC ROLLER BRAKE - Air operated conveyor accessory that stops rollers in 2 ft. or 3 ft. zones

BLADE STOPS - Pneumatically or manually operated blade that pops up between rollers in order to accumulate product

SPRING BALANCED GATE - 6 ft. section consisting of 2 ft. fixed section and 4 ft. gate section

OTHER ACCESSORIES - Stops, poly-tier supports, ceiling hangers, traffic cop, belt transfer

ELECTRICAL CONTROLS - One direction manual start switch, reversing drum switch, non-reversing and reversible IEC starters, push button stations, AC variable frequency drive



HOW IT WORKS

The LSS19 is a minimum pressure conveyor meaning that product can be accumulated with a minimal amount of back pressure and horsepower. A drive shaft spanning the length of the conveyor transmits power to the tread rollers through drive spools and drive belts. If back pressure (accumulation) is applied, the drive spool will slip on the drive shaft, stopping power to the tread roller.