

# BS300B

## HORIZONTAL BELT CONVEYOR (Slider Bed)

With its rugged, heavier duty construction, the BS300B is ideal for transporting larger packages or multiple smaller packages across its width. It can be used in many types of material handling applications such as assembly operations, sorting, packaging, and inspection or for simply transporting product from point A to B.



- Smooth, slim design
- Coped ends
- 6 belt widths
- Multiple belt options

OVERALL LENGTH 6" DIA. TAIL PULLEY	BED LENGTH	OVERALL LENGTH WITH CENTER DRIVE	CONVEYOR WEIGHT (LBS.)					
			BELT WIDTH					
			24"	30"	36"	42"	48"	52"
			BED WIDTH					
			30"	36"	42"	48"	54"	58"
7'-1"	5'	6'-4"	461	445	N/A	N/A	N/A	N/A
12'-1"	10'	11'-4"	564	629	698	767	834	880
17'-1"	15'	16'-4"	672	751	837	922	1,003	1,061
22'-1"	20'	21'-4"	775	868	969	1,069	1,166	1,234
27'-1"	25'	26'-4"	883	991	1,108	1,224	1,335	1,415
32'-1"	30'	31'-4"	986	1,108	1,240	1,372	1,498	1,588
37'-1"	35'	36'-4"	1,094	1,230	1,379	1,527	1,667	1,769
42'-1"	40'	41'-4"	1,197	1,347	1,511	1,674	1,830	1,942
47'-1"	45'	46'-4"	1,302	1,470	1,650	1,829	1,999	2,123
52'-1"	50'	51'-4"	1,408	1,587	1,782	1,977	2,162	2,296
57'-1"	55'	56'-4"	1,516	1,709	1,921	2,132	2,331	2,477
62'-1"	60'	61'-4"	1,619	1,826	2,053	2,279	2,494	2,650
67'-1"	65'	66'-4"	1,727	1,949	2,192	2,434	2,663	2,831
72'-1"	70'	71'-4"	1,830	2,066	2,324	2,582	2,826	3,004
77'-1"	75'	76'-4"	1,938	2,188	2,463	2,737	2,995	3,185
82'-1"	80'	81'-4"	2,041	2,305	2,595	2,884	3,158	3,358
87'-1"	85'	86'-4"	2,149	2,428	2,734	3,089	3,327	3,539
92'-1"	90'	91'-4"	2,252	2,545	2,866	3,187	3,490	3,712
97'-1"	95'	96'-4"	2,360	2,667	3,005	3,342	3,659	3,893
102'-1"	100'	101'-4"	2,463	2,784	3,137	3,489	3,822	4,066

Note: A short belt segment laced on both ends, commonly called a "Dutchman", is provided on conveyors 35 ft. to 70 ft. This allows for future belt stretch with standard end take-up. An underside take-up or center drive with take-up is recommended for conveyors over 70 ft. long.

## STANDARD SPECIFICATIONS

**BELT** - Black Trackmate 120 EMB

**BED** - 6 5/8 in. deep x 12 ga. powder coated steel slider bed. Standard 5 ft. and 10 ft. long bolt-together sections with splice plates.

**END DRIVE** - Located on discharge end of conveyor. Chain guard is on left-hand side when standing at infeed looking toward discharge.

**DRIVE PULLEY** - 8 in. dia. with 1 7/16 in. dia. shaft at bearing. Machined, crowned and fully lagged.

**TAIL PULLEY** - 6 in. dia. with 1 3/16 in. dia. shaft at bearing. Machined crown

**SNUB ROLLERS** - Adjustable 2 1/2 in. dia. rollers. Grease packed ball bearings. Includes guard.

**RETURN ROLLERS** - Adjustable 1.9 in. dia. rollers. Grease packed ball bearings

**TAKE-UP** - Provides 4 in. of belt take-up at tail pulley

**BEARINGS** - Sealed, pre-lubricated, self-aligning, ball bearings on drive and tail pulleys

**BELT SPEED** - Constant 65 FPM

**SPEED REDUCTION** - Sealed worm gear C-face speed reducer with No. 50 roller chain to drive pulley

**MOTOR** - 1 HP – 230/460 V – 3 phase – 60 Hz totally enclosed fan cooled, energy efficient

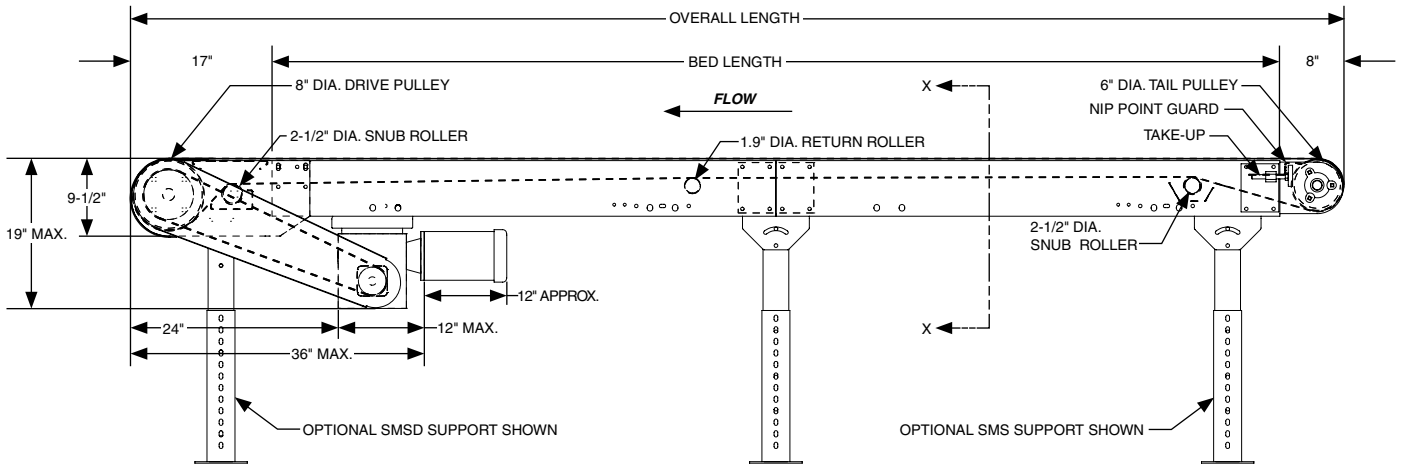
**FRAME CAPACITY** - Maximum load per linear foot of conveyor is 100 lbs. Not to exceed drive capacity in chart.

FPM	HP	BELT WIDTH	LOAD CAPACITY (LBS.)				
			HORIZONTAL W/ STANDARD BELT				
			8" DRIVE PULLEY				
			12'	32'	52'	78'	102'
35	1	24"-30"	1,200*	1,690	1,660	1,620	1,580
		36"-42"	1,200*	1,660	1,620	1,560	1,510
		48"-52"	1,200*	1,640	1,580	1,510	1,450
65	1	24"-30"	1,020	980	960	910	870
		36"-42"	1,000	960	920	860	800
		48"-52"	990	930	880	810	740
	2	24"-30"	1,200*	2,050	2,020	1,980	1,940
		36"-42"	1,200*	2,020	1,980	1,920	1,870
		48"-52"	1,200*	1,990	1,940	1,870	1,800
100	1	24"-30"	690	660	630	590	550
		36"-42"	670	630	585	530	475
		48"-52"	660	605	550	480	410
	2	24"-30"	1,200*	1,390	1,355	1,315	1,280
		36"-42"	1,200*	1,360	1,310	1,255	1,200
		48"-52"	1,200*	1,330	1,275	1,205	1,140
135	1	24"-30"	505	475	445	400	365
		36"-42"	485	440	400	340	290
		48"-52"	470	415	360	290	225
	2	24"-30"	1,090	1,055	1,025	985	945
		36"-42"	1,070	1,025	980	925	870
		48"-52"	1,055	1,000	945	875	810

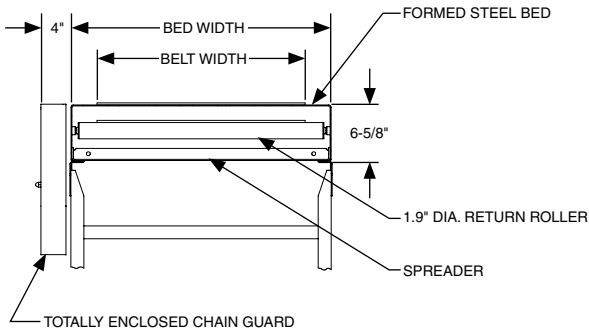
\* Limited by conveyor capacity

Note: Capacities shown assume a constant speed and maximum of 6 starts/stops per minute with no more than 30 starts/stops per hour.

## 8" END DRIVE



## SECTION VIEW X-X



## OPTIONAL EQUIPMENT

**FLOOR SUPPORTS** - SMS floor supports are available in wide range of adjustments. Specify top of belt elevation. One support is required at every bed joint and at ends of conveyor. Holes in feet are provided for lagging to floor. Knee braces supplied on SMS-7 support and above.

**BELT** - Tan Glidetop, White Polymate 100 RMP - COS, Black Trackmate 120 Roughtop with PVC cover

**BELT SPEED** - Other constant and variable speeds: 17 - 135 FPM in any increment. Contact factory for speeds not listed.

**MOTORS** - Inverter duty, premium energy efficient, single phase, brake motor, other characteristics. 2 HP maximum.

**CENTER DRIVE / TAKE-UP** - Provides 16 in. of belt take-up and is suitable for reversing applications

- Standard underhung drive: 20 in. minimum elevation. 78 in. minimum OAL.
- Side mount drive/low elevation center drive: 16 1/2 in. minimum elevation. 66 in. minimum OAL.

**UNDERSIDE TAKE-UP** - Provides 16 in. of belt take-up. Extends down 15 3/4 in. from top of belt.

**V-GUIDED CONSTRUCTION** - When overall length to belt width ratio drops below 2.5:1 but is still greater than 1:1, V-guided belt is required to maintain belt tracking.

**BUTT COUPLINGS** - Brackets allow 1.9 in / 2 in. dia. gravity roller conveyor along with other conveyors to be attached to end of belt conveyor. Includes 1 in. dia. pop-out transfer roller. Center drive or underside take-up recommended if butt couplings are to be located at tail end.

**GUIDE RAILS** - Adjustable channel guide rails, solid side guides

**OTHER ACCESSORIES** - Floor supports with casters, poly-tier supports, ceiling hangers. See accessory section.

**ELECTRICAL CONTROLS** - One direction manual start switch, reversing drum switch, non-reversing and reversible IEC starters, push button stations, AC variable frequency drive