

LSSS 19

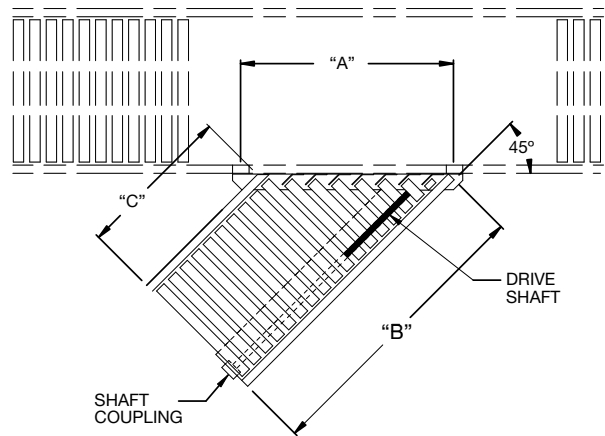
LINESHAFT DRIVEN LIVE ROLLER STRAIGHT SPUR

The LS19 live roller curves are used to transfer product from one conveying line onto another. Suitable for merging or diverging applications, they are available self-powered or can be slave driven from a straight section or curve.

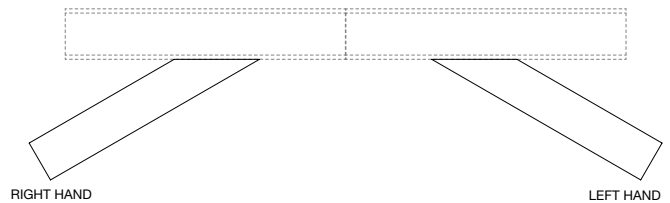
- 12 widths
- 30 and 45 degree straight spurs
- Right or left hand units available

BETWEEN FRAME WIDTH	30° SPUR				45° SPUR			
	"A"	"B"	"C"	WT. (LBS.)	"A"	"B"	"C"	WT. (LBS.)
13"	30 11/16"	36"	12"	32	28 1/8"	36"	21"	37
15"	37 3/4"	48"	21"	49	28 1/8"	36"	21"	40
17"	44 11/16"	48"	15"	48	32 3/8"	36"	18"	40
19"	44 11/16"	48"	12"	49	36 9/16"	36"	15"	40
21"	53 1/2"	60"	21"	70	36 9/16"	36"	15"	44
23"	53 1/2"	60"	18"	71	40 13/16"	36"	12"	43
25"	58 9/16"	60"	15"	72	45 1/16"	48"	21"	65
27"	58 9/16"	60"	12"	73	45 1/16"	48"	21"	70
31"	72 3/8"	72"	15"	97	53 9/16"	48"	15"	68
33"	72 3/8"	72"	12"	98	53 9/16"	48"	15"	73
37"	81 1/16"	84"	18"	129	62 1/16"	60"	21"	100
39"	84 1/2"	84"	15"	130	62 1/16"	60"	21"	106

PLAN VIEW - 30°, 45° STRAIGHT SPURS



SPUR FLOW (SPECIFY)



STANDARD SPECIFICATIONS

BED - 5 1/2 in. deep x 1 1/2 in. flange x 12 ga. powder coated steel channel frame with 2 1/2 in. dia. tapered to 1 11/16 in. dia. x 14 ga. galvanized rollers. 1.9 in. dia. x 16 ga. galvanized rollers provided in tangent sections.

STRAIGHT SPURS - 30 and 45 degree

COUPLINGS - Butt type for connecting to other lineshaft conveyor sections

SLAVE DRIVEN - Spurs are slave driven from the drive shaft of adjacent lineshaft conveyor section. Shafts are coupled together by a Delrin chain coupling at the bed joints.

DRIVE SHAFT - 1 in. dia. steel shaft with universal joints as necessary

DRIVE SPOOLS - 2 in. dia. Delrin spool held in place on shaft by "snap-on" retaining clips

DRIVE BELTS - 3/16 in. dia. urethane belts from drive spools to rollers

SPOOL GUARD - Encloses underside of drive shaft, spools and drive belts

BEARINGS - Sealed, self-aligning, pre-lubricated ball bearings support drive shaft

CAPACITY - Maximum of 15 lbs. per roller. Do not exceed a 75 lbs. total product load

OPTIONAL EQUIPMENT

FLOOR SUPPORTS - H-style floor supports are available with a wide range of adjustments. Specify top of roller elevation. For curves, one support is required at each end along with one single support at the center. For spurs, one support is required at bed joint. Holes in feet are provided for lagging to floor. Knee braces supplied on MHST-9 support and above.

DRIVE - Drive units can be mounted to curves rather than being slave driven

GUIDE RAILS - Adjustable channel guide rails, fixed angle, and channel guide rails. One or both sides. Note: If product contacts guide rails, product flow may be affected.

OTHER ACCESSORIES - Poly-tier supports, ceiling hangers, plow arm, traffic cop, turning wheel.