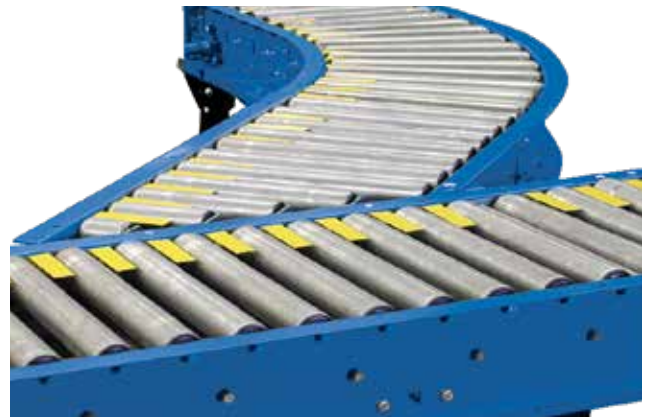


# VBCS19

## V-BELT DRIVEN LIVE ROLLER CURVE SPUR (1.9 in. dia. x 16 ga. rollers)

The Model VBCS19 curve spurs are used to transfer product from one conveying line onto another. Suitable for merging or diverging applications, they are available self-powered or can be slave driven from a straight section or curve.



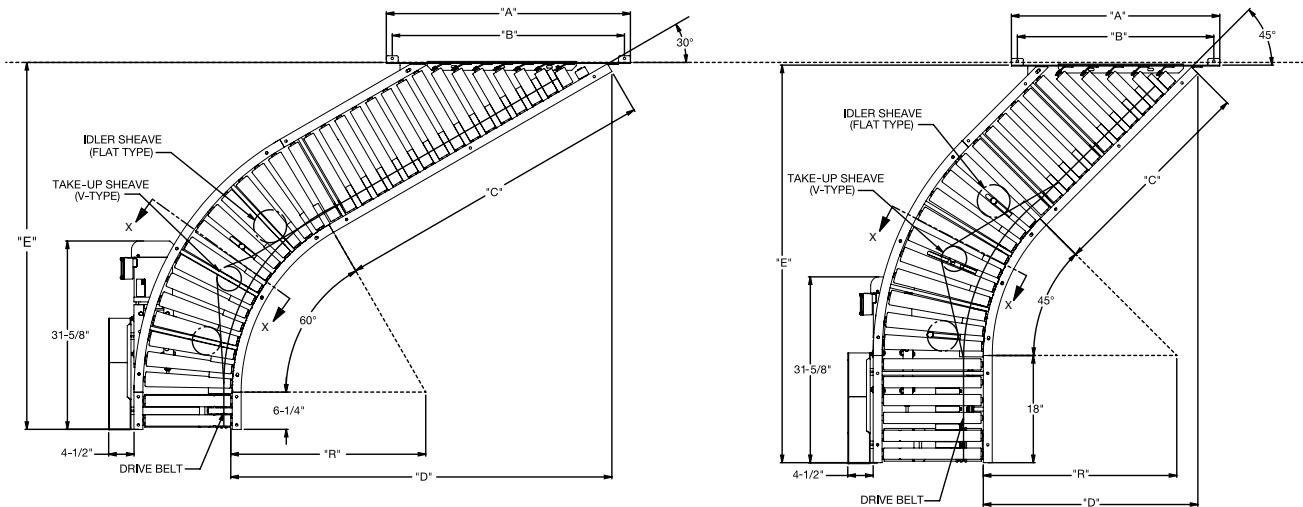
- 12 widths
- 30 and 45 degree curve spurs
- Right or left hand units available

BETWEEN FRAME WIDTH	OVERALL FRAME WIDTH	"R"	"A"		"B"		"C"		"D"		"E"		TOTAL NUMBER OF ROLLERS *		WEIGHT (LBS.)										
			30°	45°	30°	45°	30°	45°	60°	90°	30°	45°	30°	45°	30°	45°									
13"	16"	24"	38"	29"	36"	27"	30"	21"	38"	21-7/8"	42-1/4"	50"	12S/10T	13S/8T	206	195									
15"	18"		41"	32"	39"	30"									245	224									
17"	20"		47"	35"	45"	33"									255	233									
19"	22"		50"	38"	48"	36"									264	241									
21"	24"		53"	41"	51"	39"									270	250									
23"	26"		56"	44"	54"	42"									287	262									
25"	28"	32-1/2"	62"	47"	60"	45"	54"	36"	63"	35"	61-5/8"	66-5/8"	20S/14T	18S/10T	299	276									
27"	30"		65"	50"	63"	48"									311	282									
31"	34"		48"	74"	56"	72"									54"	75"	48"	89"	48"	58-1/2"	86-1/16"	27S/22T	22S/14T	380	322
33"	36"			77"	59"	75"									57"									390	329
37"	40"			86"	65"	84"									63"									406	340
39"	42"			89"	68"	87"									66"									416	351

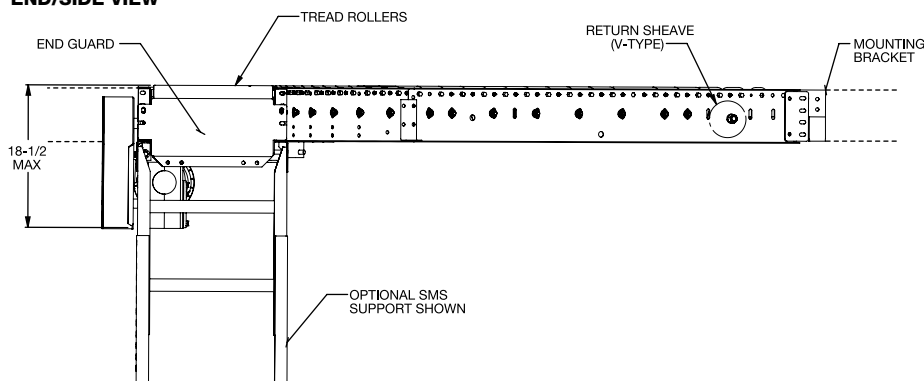
\*T= Tapered, S- Straight

**Note:** Curve spurs are non-accumulating

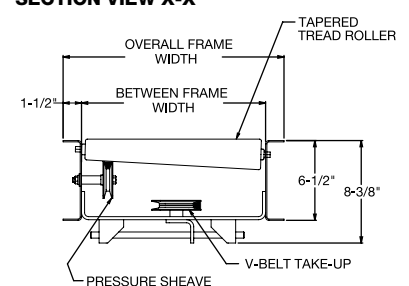
### PLAN VIEW - 30° AND 45° CURVE SPURS



### END/SIDE VIEW



### SECTION VIEW X-X



## STANDARD SPECIFICATIONS

**BED** – 6 1/2 in. deep x 1 1/2 in. flange x 12 ga. powder coated steel channel with 2 1/2 in. dia. tapered to 1 11/16 in. dia. x 14 ga. galvanized rollers. 1.9 in. dia. x 16 ga. galvanized rollers provided in tangent sections.

**SPUR CURVES:** 30 and 45 degree spur curves. 24 in., 32 1/2 in. or 48 in. radius dependent upon between frame widths.

**COUPLINGS** – Butt type for connecting to VBS19, VBC19, BDS19T or BDS19M conveyors

**END DRIVE** – Mounted underneath bed section on outside radius

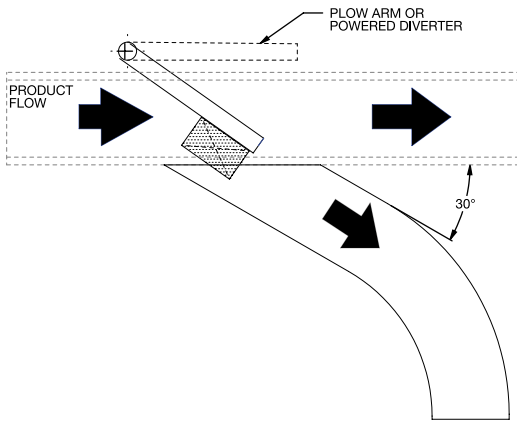
**DRIVE BELT** – Endless B-section V-belt, industrial grade

**POSITIVE DRIVE PRESSURE SHEAVES** – 2 1/2 in. dia. with 3/8 in. bore

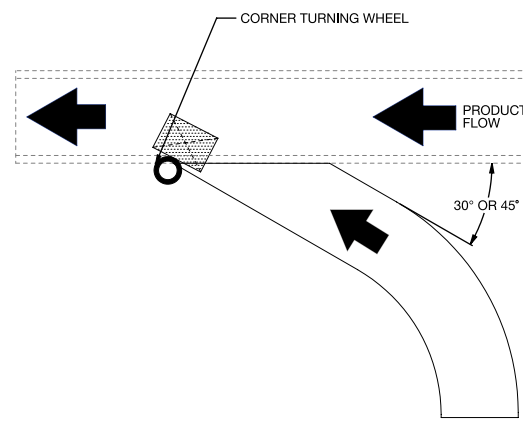
**IDLER SHEAVE** – 4 in. dia. x 5/8 in. bore V-type and/or 5 in. dia. 5/8 in. bore flat-type

Live roller spurs are used to transfer product onto and off of main conveyor lines. The illustrations below show the correct usage of turning wheels and plow arms with spurs in diverging and merging applications.

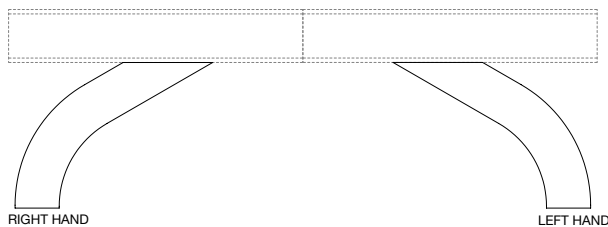
### DIVERGING



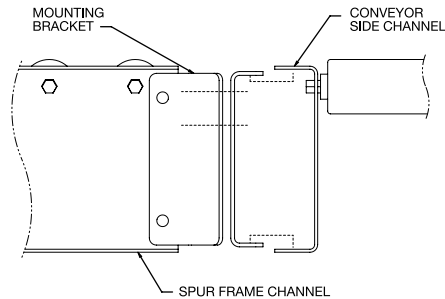
### MERGING



### SPUR FLOW (SPECIFY)



### MOUNTING BRACKET



## OPTIONAL EQUIPMENT

**FLOOR SUPPORTS** – SMS Type floor supports are available with a wide range of adjustments. Specify top of roller elevation. One support is required at every bed joint and at the ends of conveyor. Holes in feet are provided for lagging to floor. Knee braces supplied on SMS-7 support and above.

**CONVEYING SPEED** – Other constant and variable speeds.

Note: Capacity affected with speed change.

- Underhung and side mounted drives: 25 – 120 FPM in any increment
- Shaft mounted drive: 25, 30, 45, 50, 65, 85 and 105 FPM nominal
- Abec-1 Bearing recommended on speeds higher than 120 FPM
- Contact factory for speeds not listed

**END DRIVE** – Mounted on inside radius. Minimum elevation 18 7/8 in. TOR.

**SHAFT MOUNTED DRIVE** – Drive unit mounted on extended drive shaft. Mounting bracket and torque arm allow for multiple mounting positions. Minimum elevation:

- Standard sheave retainer: 10 1/4 in. TOR
- Low elevation sheave retainer: 8 3/4 in. TOR

**TAKE-UP SHEAVE** – 4 3/8 in. dia. x 5/8 in. bore V-type sheave to maintain proper V-belt tension.

**BEARINGS** – Tread rollers have grease packed ball bearings. Flange and pillow block bearings are sealed and pre-lubricated.

**MOUNTING BRACKET** – Bracket is supplied to attach spur to side channel of a VBS19, BDS19T or BDS19M conveyors.

**CONVEYING SPEED** – Constant 65 FPM.

**SPEED REDUCTION** – Sealed worm gear speed reducer with No. 50 roller chain to drive shaft

**MOTOR** – 1/2 HP –230/460V-3 phase 60Hz totally enclosed fan cooled, energy efficient

**CAPACITY** – 500 lbs. total distributed live load