

FLAT MOTOR STRAIGHT SPUR
(1.9 in. dia. x 16 ga. rollers)
(Zero Pressure Accumulation 24 VDC)

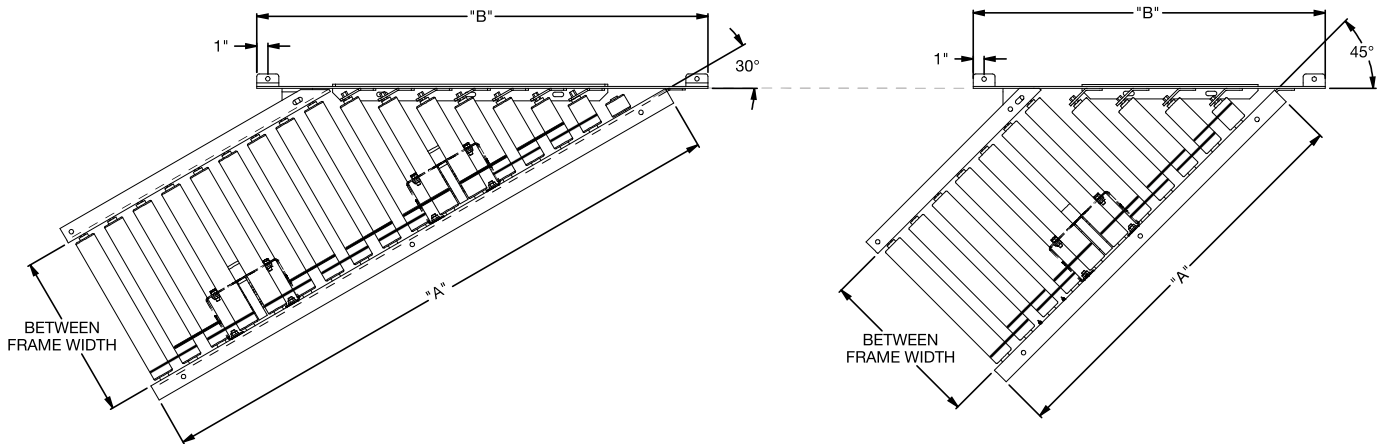
The Model FMSS19Z straight spurs are used to merge product from one conveying line onto another. Each zone's tread rollers are powered by a 24VDC motor that is controlled by a ProLogic zone controller.

ProLogic
ACCUMULATION SYSTEM
Patent Pending

- 12 widths
- ProLogic accumulation system
- 30 and 45 degree straight spurs

BETWEEN FRAME WIDTH	OVERALL FRAME WIDTH	NUMBER OF MOTORS		"A"		"B"		WEIGHT (LBS.)			
		30°	45°	30°	45°	30°	45°	30°	45°		
13"	16"	1	1	30"	21"	38"	29"	224	177		
15"	18"	2		54"	36"	41"	32"	233	184		
17"	20"					47"	35"	241	191		
19"	22"					50"	38"	249	198		
21"	24"					53"	41"	256	204		
23"	26"					56"	44"	262	210		
25"	28"					62"	47"	272	219		
27"	30"					65"	50"	278	225		
31"	34"					75"	48"	74"	56"	290	237
33"	36"							77"	59"	296	242
37"	40"							86"	65"	306	253
39"	42"							89"	68"	310	256

PLAN VIEW – 30° AND 45° STRAIGHT SPURS



STANDARD SPECIFICATIONS

BED – 6 1/2 in. deep x 1 1/2 in. flange x 12 ga. powder coated steel channel with 1.9 in. dia. x 16 ga. galvanized tread rollers spaced on 3 in. centers.

GUIDE RAIL – 2 1/2" deep guide rails protect photo eye and reflectors while also preventing product spillage

COVER – Transparent smoked Lexan covers on drive side protect electrical components

SPURS – 30 and 45 degree spurs

MOTOR – 24 VDC flat motor(s) mounted on inside of conveyor frame

MOTOR DRIVER CARD – One required for each motor

DRIVE/SLAVE BELTS – 3/16 in. dia. urethane belts from motor drive spool to rollers and roller to roller

ACCUMULATION ZONES – One accumulation zone per spur

POWER SUPPLY – Not included. Typically powered from straight sections power supply.

ProLogic ZONE CONTROLLER – Controls the accumulation or release of product. See controls section.

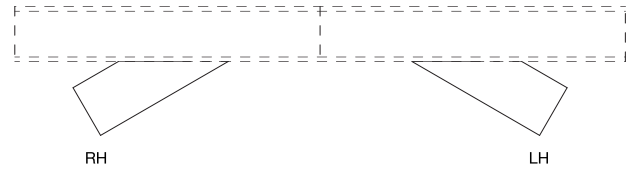
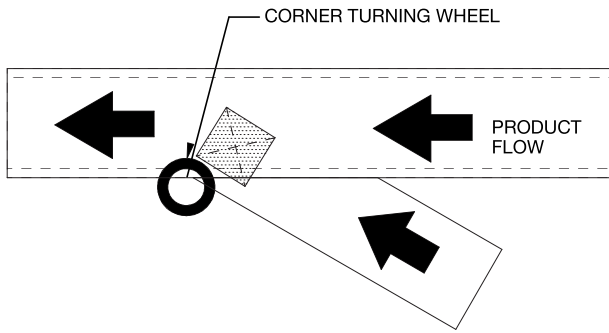
SENSORS – Retro-reflective photo eye with reflector

BEARINGS – Sealed, pre-lubricated, self-aligning, ball bearings on drive and tail pulleys. Grease packed ball bearings in tread and pressure rollers.

CONVEYING SPEED – 50-120 FPM. Selectable on motor drive card.

CAPACITY – 75 lbs

MERGING



OPTIONAL EQUIPMENT

FLOOR SUPPORTS – SMS Type floor supports are available with a wide range of adjustment. Specify top of belt or roller elevation. One support required at every bed joint and ends of conveyor. Holes in feet for lagging to floor. Knee braces included on SMS-7 support and above.

ROLLERS HIGH – Outboard guide rails to allow 1 1/2 in. of product overhang per side

POWER SUPPLY – 5 AMP power supply is available for stand-alone spurs (3 motors maximum)

SENSOR – Diffuse photo eye

GUIDE RAILS – Adjustable channel guide rails. Note: If product comes into contact with guide rails, product flow may be affected.

OTHER ACCESSORIES – Poly-tier supports, ceiling hangers. See accessory section.